

# Installing, Updating and Configuring Reckon Accounts Business to operate on Servers or Simple Computer Networking.

## Introduction:

This document is prepared to assist Reckon Account Business users who intend to use Reckon Accounts Business Premier or Enterprise on a Microsoft® Windows® Server 2008, 2012 and 2016.

Tested Environment:

- Server 2016 Essentials x64
- Server 2012 R2 Essentials x64
- Server 2008 R2 Enterprise x64

The following instructions will not detail steps on how to setup your network or Terminal Services – but instead, will assist on how to install and make sure that Reckon Accounts Business software and files are working properly when in this Environment.

Reckon Accounts Business users must be set up as part of the **Power Users Group or Administrator Group** on the server, to have the operating system rights to write to the registry keys and be able to use Reckon Accounts Business correctly.

### Important!

**Reckon Accounts Business and Terminal Services was only tested on a local area network using Microsoft® Remote Desktop Connection.**

**Citrix connections are known to work but may require additional configuration by the Citrix administrator. Not supported by Reckon.**

## Detailed Instructions:

### Installing on a Windows Server 2012 and 2016

1. Log in as the **Windows Administrator**.
2. Add Remote Desktop Connection to run Reckon Accounts Business using Remote Access.  
*Note: Your IT sets all the configuration settings in the server, the below are just steps how the **Remote Desktop Services** are needed to install for users to run RAB in terminal servers or remote desktop connection.*
  - a. Go to Start > Control Panel > Administrative Tools > Server Manager
  - b. From the Dashboard > click Add Roles and features
  - c. Choose **Role-based or feature-based installation** > then follow the onscreen instructions.
  - d. Once the installation is done > do the same step again this time choosing **Remote Desktop Services installation** > follow the onscreen instructions.

### Installing on a Windows 2008

1. Log in as the **Windows Administrator**.
2. Change **IE ESC to OFF:**

**NOTE:** Setting needs to be OFF as well to open Reckon Accounts Business. Otherwise, the application fails to launch.

- a. Go to Start > Control Panel > Administrative Tools > Server Manager
- b. Under the "security information section, click on the Configure IE ESC" link
- c. Change status to OFF; click OK.
- d. Turn off Windows Firewall.

3. Activate the Terminal Server Role:

- a. Server Manager > Roles > Add Roles > Next
- b. Tick the box Terminal Services and then follow the prompts.

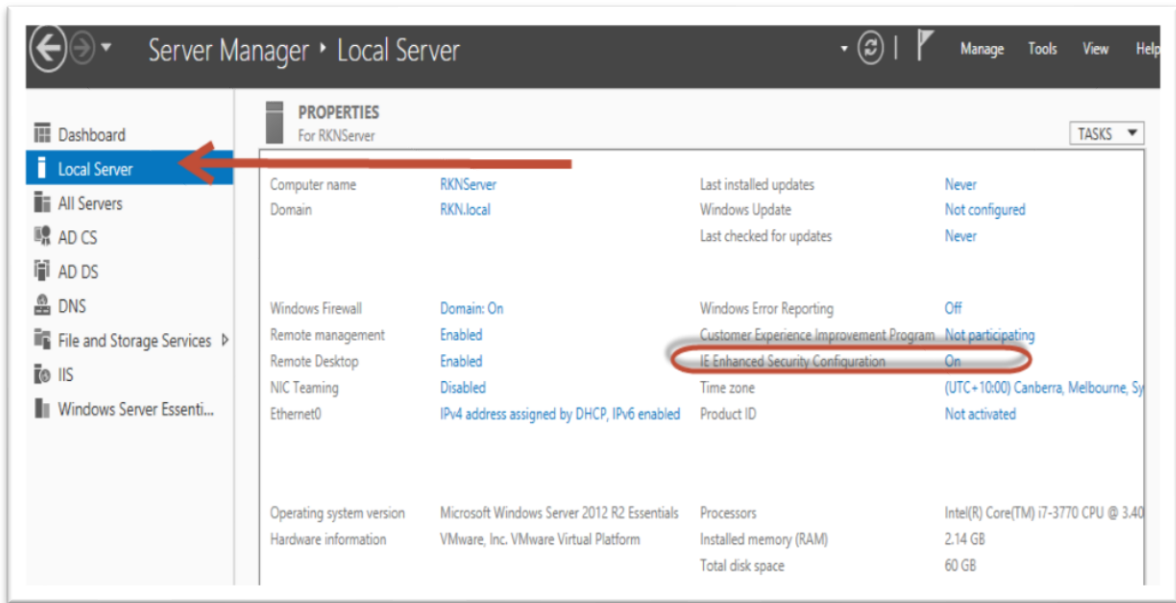
4. Install Reckon Accounts Business:

a. Install mode

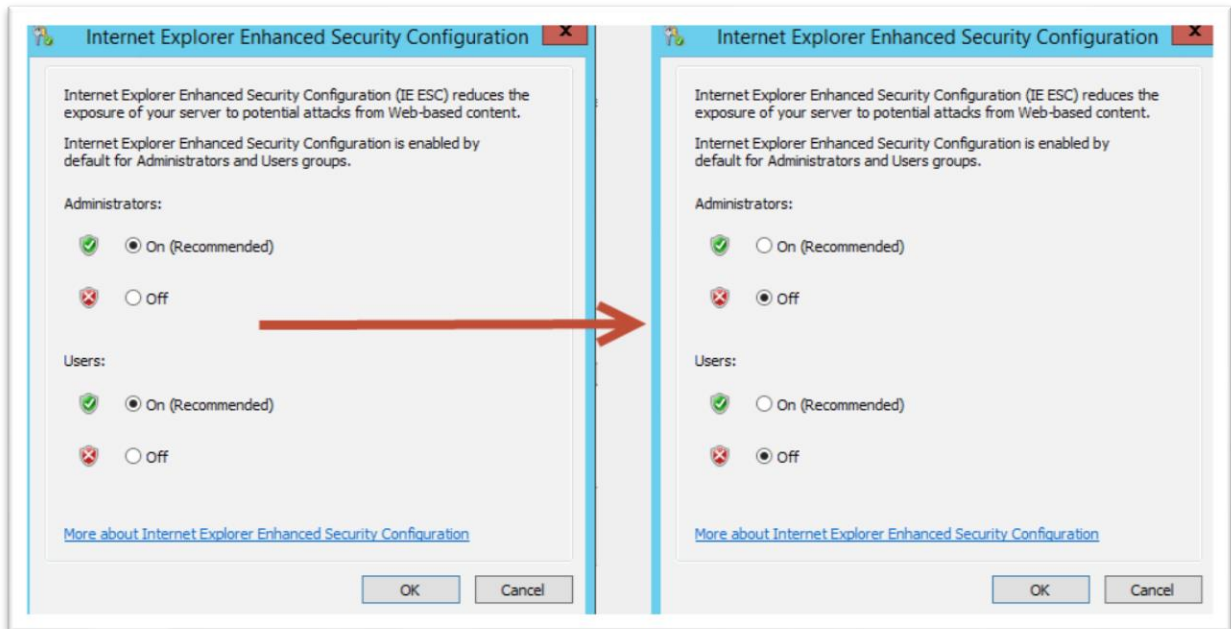
- In server 2008 Install mode needs to be enabled
- Click the start button and then click > Run
- Type 'cmd' in the open box
- Once Command prompt opens, type > '**Change user /install**' to place the server into **Install mode**.
- Install the application.
- After installing the application, open the command prompt again and use the '**Change user /execute a**' command to place the server back into **Execute mode** before using the application.
- Server restart is needed.

b. Installation via Control Panel

- Click Start > Control Panel > Install Application on Terminal Sever.
- Follow the prompts to locate the setup.exe file on the DVD drive or where the installer has been copied to and install (This works exactly same as Add/Remove program > Add New Programs)



a. Click "OFF" for ADMIN and USER.



## Types of RAB installation:

Below are the three options users can choose to install the Reckon Accounts:

**Option 1: Install Reckon Accounts and Company File Server** – choose when the computer will run Reckon Accounts and will share its Reckon Accounts company files with other computers.

**Option 2: Install Reckon Accounts Only** – choose when the computer will run Reckon Accounts but will not share its Reckon Accounts company files with other computers.

**Option 3: Install Reckon Accounts Company File Server Only** – choose when the computer will NOT run Reckon Accounts but will share its Reckon Accounts company files with other computers.

## Type of Environment Installation

1. Using server as file location only > install OPTION 3, install option 2 on workstations (computers)
2. Using server as Terminal Server/Remote Desktop (for remote access) > install OPTION 1
3. Using File Server only > install option 3 in the file server, then option 2 on workstations (computers)

## Multuser access and firewall configurations.

Below you will find the information regarding the Port and firewall configurations recommended on your server and workstations, for Reckon Accounts Business to work seamlessly. Add Reckon Accounts Business Ports into your Firewall exclusions (This includes your Anti-virus. Please refer to the vendor's specific guide for more information).

## Configuring RAB ports in your firewall through inbound and outbound settings (TCP)

NOTE: (You will need to do the same step on computers that are accessing the RAB file.)

- a) Open Control Panel > double click Windows firewall
- b) On the left-hand side, > click **Advanced Settings** > **Windows Firewall with Advanced Security** window will open
- c) On the left-hand side, > click **Inbound Rules** > and on the right-hand side column under **Actions** > click **New Rule**
- d) On the **New Inbound Rule Wizard**, > click **Port** > leave the **TCP** chosen as it is > and in the **Specific local ports** box enter (the RAB version port number) ex: 10181 > click **Next**.
- e) Make sure to choose the **Allow the connection** > click **next**.
- f) Make sure that **Domain, Private, Public** are ticked > click **next**.
- g) Give the Rule a **Name** > click **Finish**.
- h) Click the **Outbound Rules** from the left-hand side
- i) On the **New Outbound Rule Wizard**, > click **Port** > leave the **TCP** chosen as it is > and in the **Specific local ports** box enter (the RAB version port number) ex: 10181 > click **Next**.
- j) Make sure to choose the **Allow the connection** > click **next**.
- k) Make sure that **Domain, Private, Public** are ticked > click **next**.
- l) Give the Rule a **Name** > click **Finish**.

## Port Numbers:

RAB Version	Port Number	RAB Version	Port Number
2018	10181	2012-13	10175
2017	10180	2011-12	10174
2016	10179	2010-11	10173
2015	10178	2009-10	10172
2014	10177	Earlier Version	10172
2013	10176		

## Permissions:

**QBDataService** is the user created by Reckon Accounts which is required to have full access permission to the file.

- Right-click the folder location of your (.qbw) > click Properties
- Click the **Security** Tab > make sure that the **QBDataServiceUserXX** (where xx is the version number of RAB you are using) is added in the **Group or user names** list and with **Full Control Access**.
- Open the windows Services List and make sure that QuickBooks Database Manager Service and QuickBooksDBXX (where xx is the version number of RAB you are using) is running and set to Automatic.

## QBDataServices version:

RAB VERSION	QBDataServices version
2018	QBDataServiceUser27
2017	QBDataServiceUser26
2016	QBDataServiceUser25
2015	QBDataServiceUser24
2014	QBDataServiceUser23
2013	QBDataServiceUser22

1. Make sure the below **Database version** and **QuickBooks Database Manager Service** or **QB CFMonitorService** are running and in automatic settings in the Windows Services List.

## QBDatabase version:

RAB VERSION	QBDataServices version
2018	QuickBooksDB27
2017	QuickBooksDB26
2016	QuickBooksDB25
2015	QuickBooksDB24
2014	QuickBooksDB23

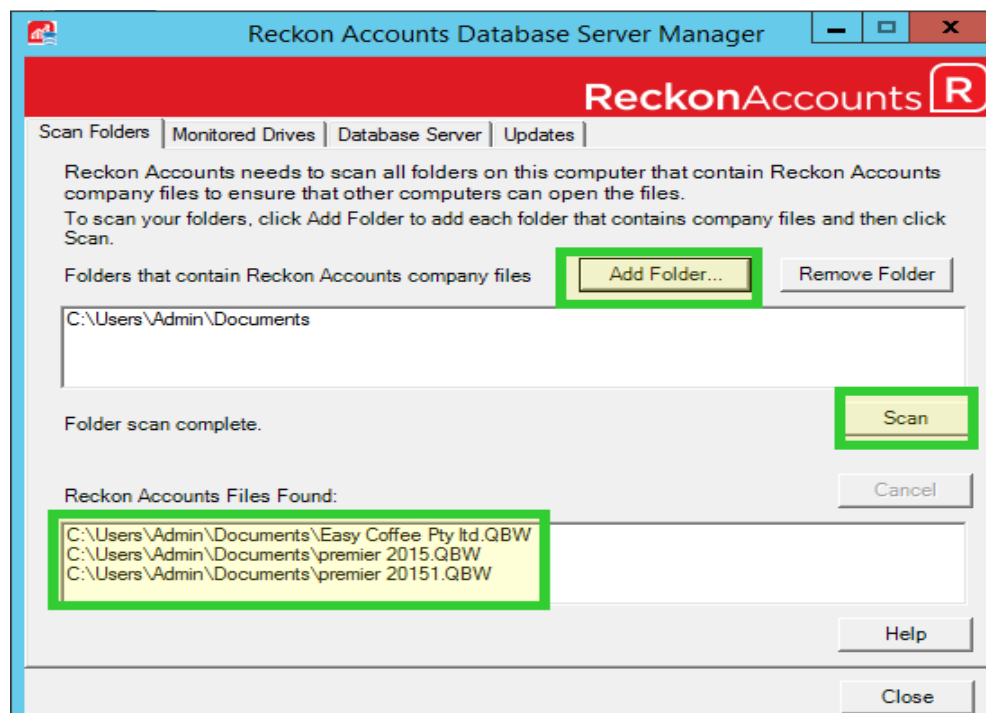
## Configuring RAB and DBSM in different environments:

### Option 1: Install Reckon Accounts and Company File Server

#### Setting UP DBSM and scanning the file:

This option is selected when you wish to use Reckon Accounts on the server too. It installs both Reckon Accounts Business and the Database Server Manager (DBSM). DBSM is used for hosting the file.

- Launch The Reckon Accounts Database Server Manager > Click Add folder > navigate and click the company file folder > click Scan
- It will list the (.QBW) file/s in the '**Reckon Accounts Files Found**' section of the window.
- Once satisfied that all your required files are listed, close the window.
- This process of scanning will create a new **.ND** (network descriptor) file on the same folder where your Reckon accounts files (.QBW) lies. It has the same name as QBW files with the type as .ND.



**NOTE:** if the file resides on a different drive make sure to tick it under "Monitored Drives" so Reckon Accounts Data Base Manager" can scan and monitor the (.QBW) files.

### Accessing the Reckon Accounts Company File

- Launch RAB does not open the file yet, make sure that it is not hosting.
  - Click the File menu > Utilities > (Host Multi-User Access) – [this should be the status.](#)
  - Click the File menu > Utilities > (Stop Hosting Multiuser) – [click this if this is the status.](#)

- b. Follow the onscreen instructions till the Hosting is turned off. (After turning off hosting, QuickBooksDBXX and QuickBooks Data Base Manager Service will stop.)
- c. Close RAB and Reckon Accounts Database Server Manager.
- d. Open the "Services List" and make sure that both have a status of Running and Automatic.
- e. Launch Reckon Accounts Database Server Manager and add the folder file location > Scan until the (.qbw) file shows.
- f. Launch RAB > check to make sure that Hosting is off.
- g. Open the company file > then switch to multi-user access to allow others to access the file at the same time.

## Remote Desktop Access

- a. Launch RAB, make sure that is it not hosting.
- b. Open the company file.

### Note:

- You do not need to open the file using RAB on the server. Any user can enable and disable the multi-user access. No other user should enable the Hosting in their own RAB Program.
- This setup can also be done using a simple peer to peer network – but the computer that holds the file cannot be turned off.

## Option 2: Install Reckon Accounts Only

This option is used to have other users that will not share the file but will access the shared RAB company file in multi-user access.

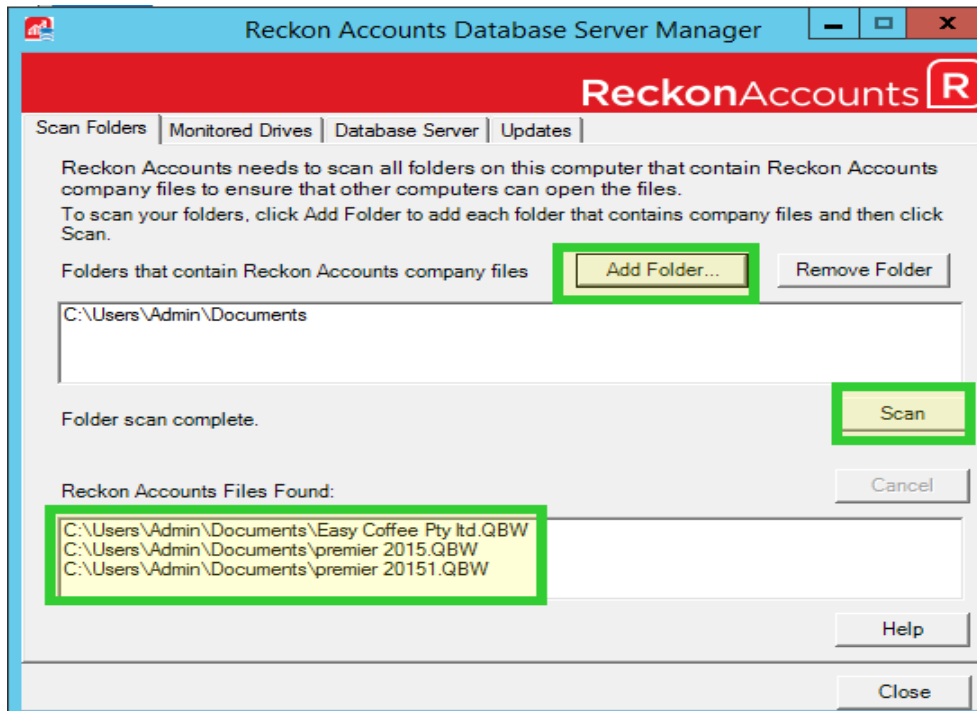
## Option 3: Install Reckon Accounts Company File Server Only

This option is selected when you wish to host the file on the Server and not use Reckon Accounts from there. All other workstations will access the file from this server via a network. And you will install option 2, 'Reckon Accounts only' on each workstation.

### Data Base Server Manager as a file host

- a. Right-click the folder location of your (.QBW) > click Properties
- b. Click the **Security** Tab > make sure that the **QBDataServiceUserXX** (where xx is the version number of RAB you are using) is added in the **Group or user names** list and with **Full Control Access**.
- c. Open the windows Services List and make sure that QuickBooks Database Manager Service and QuickBooksDBXX (where xx is the version number of RAB you are using) is running and set to Automatic
- d. Launch The Reckon Accounts Database Server Manager > Click Add folder > navigate and click the company file folder > click Scan

- e. It will show the (.QBW) file in the '**Reckon Accounts Files Found**' section at the bottom of the window.
- f. Once satisfied that all your required files are listed, close the window.
- g. This process of scanning will create a new .ND (network descriptor) file on the same folder where your Reckon accounts files (.QBW) lies. It has the same name as QBW files with the type as .ND.



NOTE: if the file resides on a different drive make sure to tick it under **Monitored Drives** tab so Reckon Accounts Data Base Manager can scan and monitor the (.QBW) files.

### Workstation Access:

- a. Install Reckon Accounts Only – or option 2.
- b. The file sitting on the server should be mapped on the workstation > Open Reckon Accounts and open the company file.
- c. Like the above settings make sure that RAB is not set to Host the file.
- d. Log in to the company file using another login credentials.

### Additional Information:

- If you are Upgrading to the new version, it is recommended you Uninstall the previous version from the server before installing the new version. Make sure you have sufficient backup of the data files.
- Whenever Reckon Accounts Business is re-installed (or Repaired), it must be activated again.